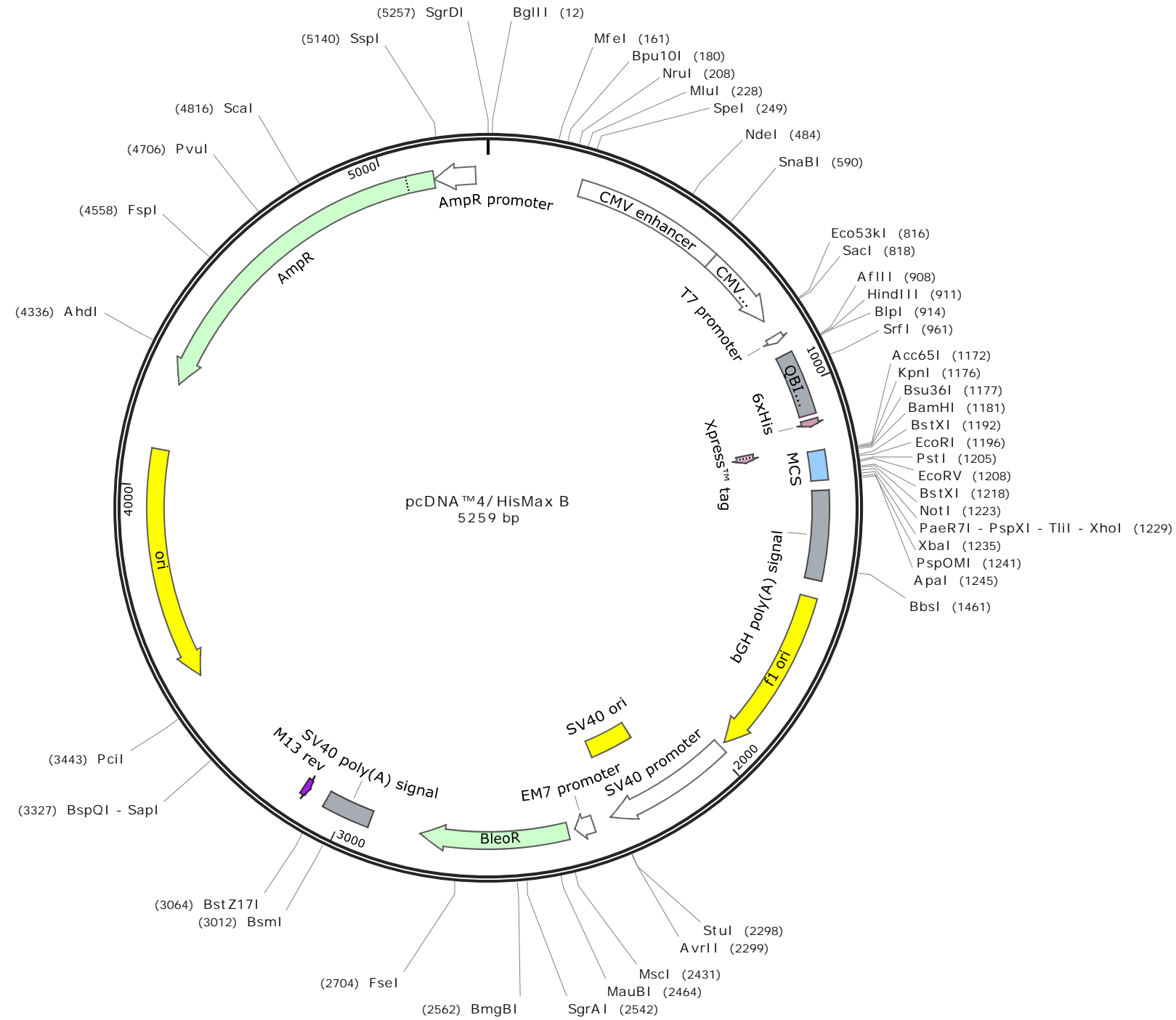
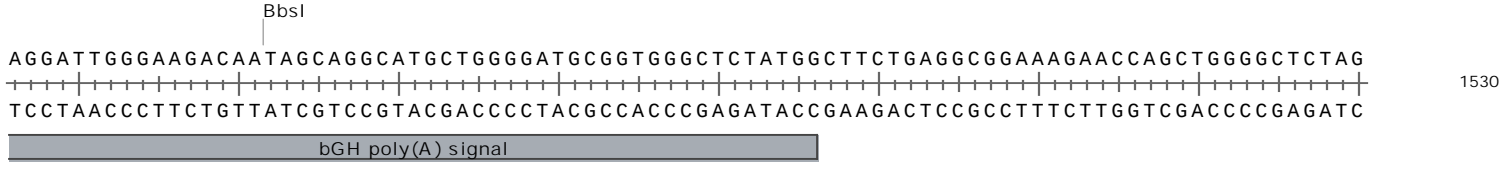
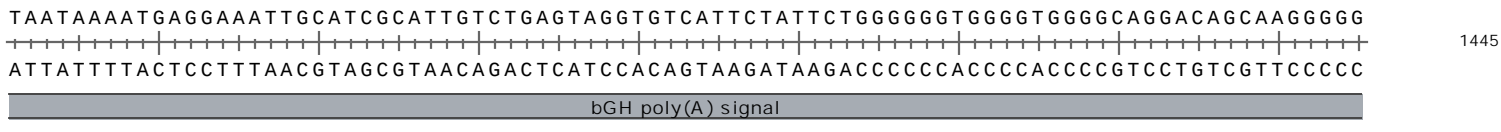
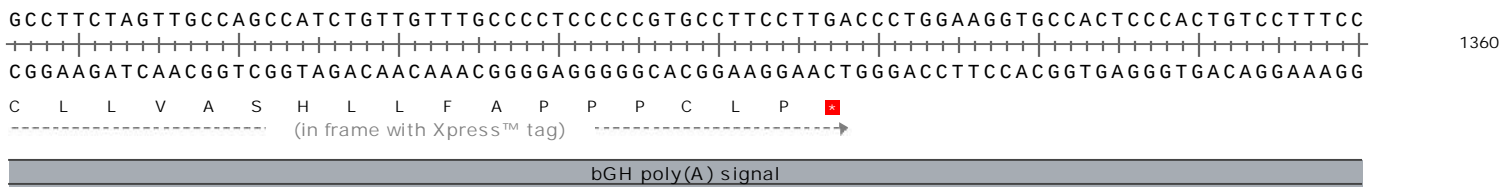
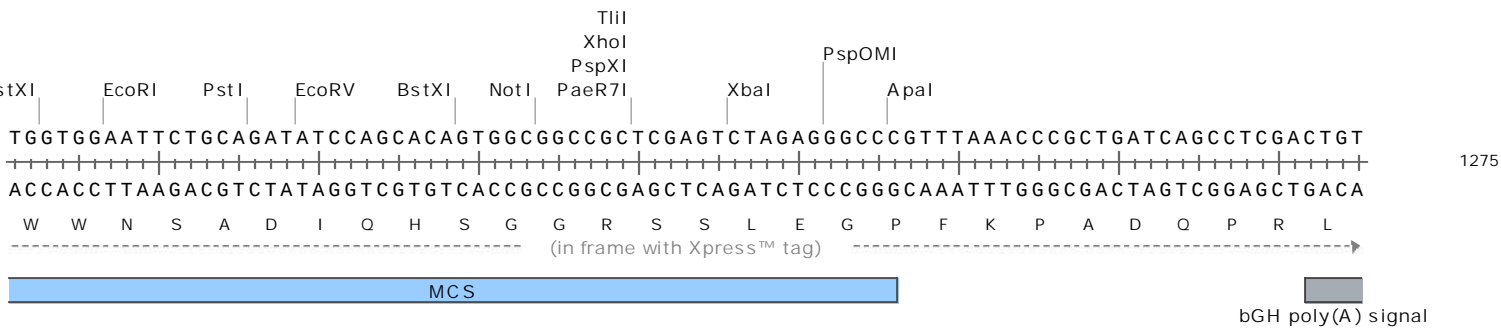
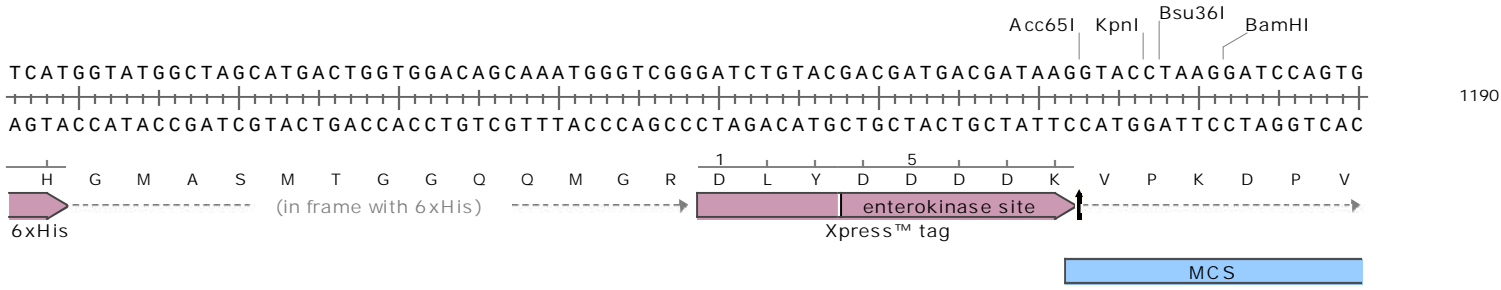
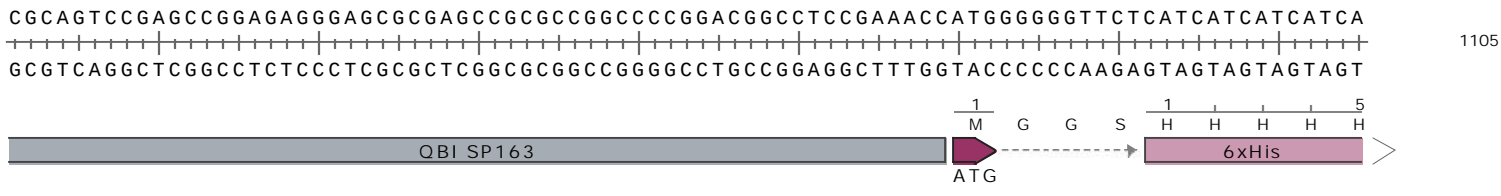
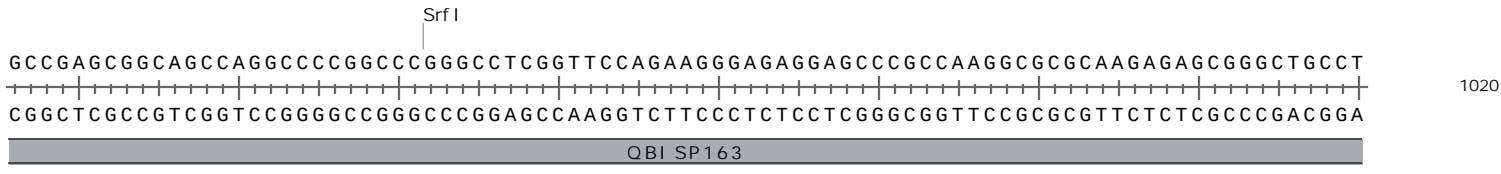
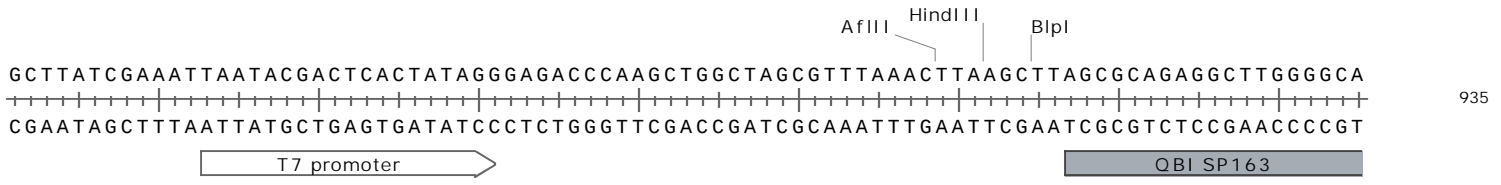


Mammalian cell vector for high-level expression of proteins with a cleavable N-terminal 6xHis tag.







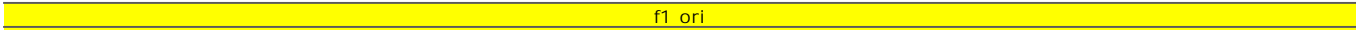
GGGGTATCCCCACGCGCCCTGTAGCGGCGCATTAAAGCGCGGGCGGGTGTGGTGGTTACGCGCAGCGTGACCGCTACACTTGCCAGC
CCCCATAGGGGTGCGCGGGACATCGCCGCGTAATTCGCGCCGCCACACCACCAATGCGCGTTCGCACTGGCGATGTGAACGGTCG



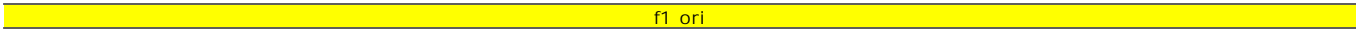
GCCCTAGCGCCCGCTCCTTTTCGCTTTCTTCCCTTCTTCTCGCCACGTTTCGCGGGCTTTCCCCGTCAAGCTCTAAATCGGGGCA
CGGGATCGCGGGCGAGGAAAGCGAAAGAAGGGAAGGAAAGAGCGGTGCAAGCGGCCGAAAGGGGCAGTTCGAGATTTAGCCCCGT



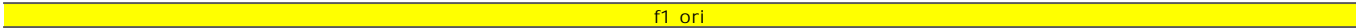
TCCCTTAGGGTTCCGATTTAGTGCTTTACGGCACCTCGACCCAAAAAAGCTTGATTAGGGTGATGGTTCACGTAGTGGGCCATC
AGGGAAATCCCAAGGCTAAATCACGAAATGCCGTGGAGCTGGGGTTTTTTGAACTAATCCCACTACCAAGTGCATCACCCGGTAG



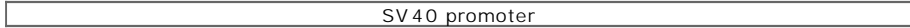
GCCCTGATAGACGGTTTTTCGCCCTTTGACGTTGGAGTCCACGTTCTTTAATAGTGGACTCTTGTTCCAAACTGGAACAACACTC
CGGGACTATCTGCCAAAAAGCGGGAAACTGCAACCTCAGGTGCAAGAAATTATCACCTGAGAACAAGGTTTGACCTTGTGTGAG



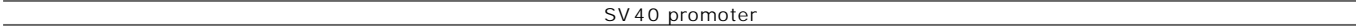
AACCCATCTCGGTCTATTCTTTGATTTATAAGGGATTTTGGGGATTTTCGGCCTATTGGTTAAAAAATGAGCTGATTTAACAAA
TTGGGATAGAGCCAGATAAGAAAAGCTAAATATTCCTAAAACCCCTAAAGCCGGATAACCAATTTTTTACTCGACTAAATTGTTT



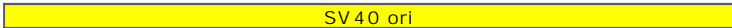
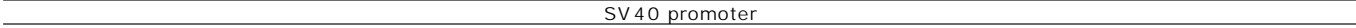
AATTTAACGCGAATTAATTCTGTGGAATGTGTGTCAGTTAGGGTGTGGAAAGTCCCCAGGCTCCCCAGGCAGGCAGAAGTATGCA
TTAAATTGCGCTTAATTAAGACACCTTACACACAGTCAATCCCACACCTTTTCAGGGGTCCGAGGGGTCCGTCCGTCTTCATACGT



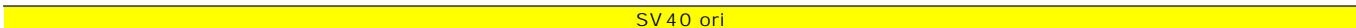
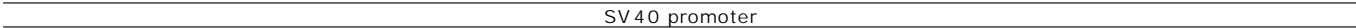
AAGCATGCATCTCAATTAGTCAGCAACCAGGTGTGGAAAGTCCCCAGGCTCCCCAGCAGGCAGAAGTATGCAAAGCATGCATCTC
TTCGTACGTAGAGTTAATCAGTCGTTGGTCCACACCTTTTCAGGGGTCCGAGGGGTTCGTCCGTCTTCATACGTTTCGTACGTAGAG



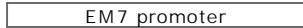
AATTAGTCAGCAACCATAGTCCC GCCCTAACTCCGCCATCCCGCCCTAACTCCGCCAGTTCCGCCATTCTCCGCCCATG
TTAATCAGTCGTTGGTATCAGGGCGGGGATTGAGGCGGGTAGGGCGGGGATTGAGGCGGGTCAAGGCGGGTAAGAGGCGGGGTAC

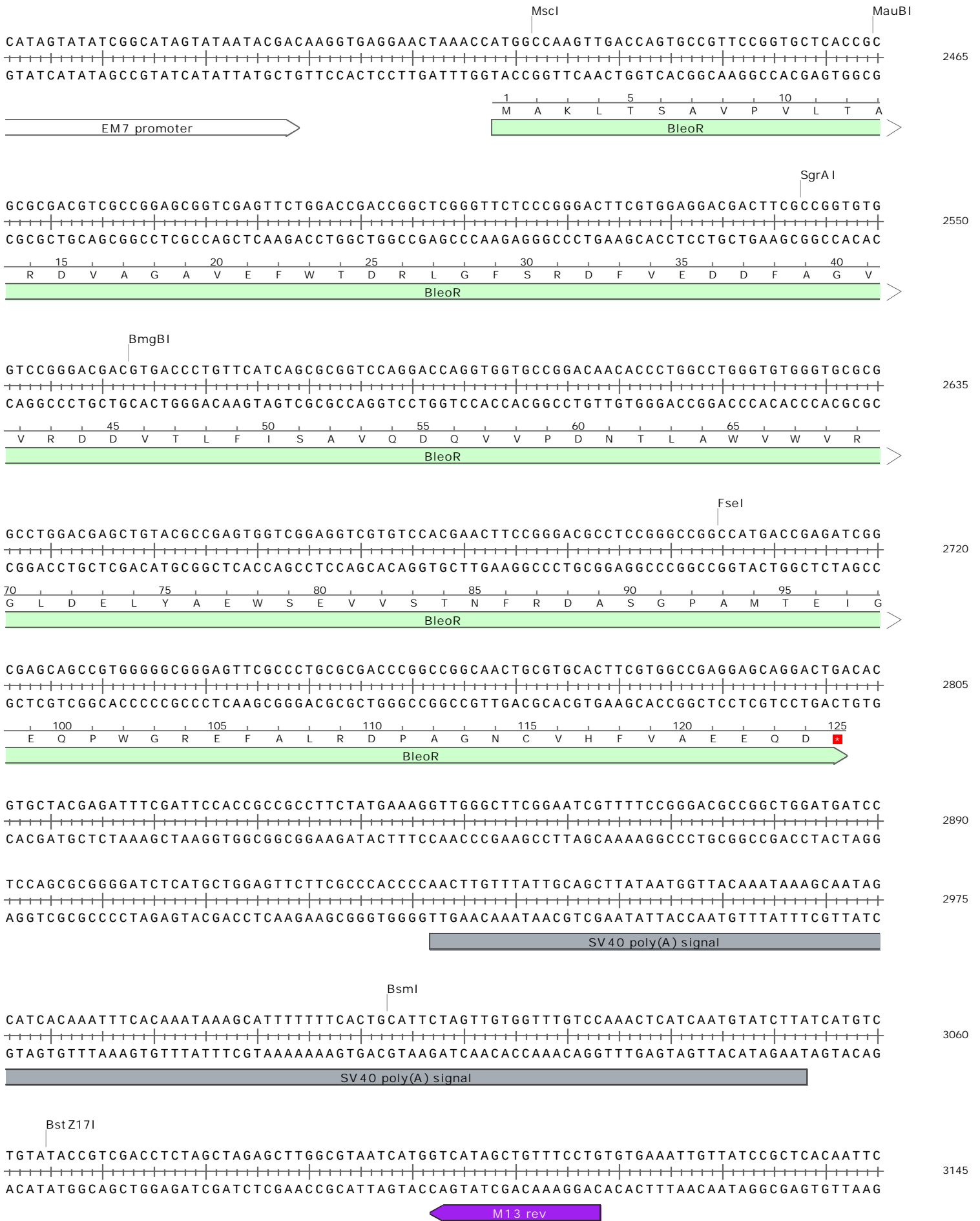


GCTGACTAATTTTTTTTATTTATGCAGAGGCCGAGGCCGCTCTGCCTCTGAGCTATTCCAGAAGTAGTGAGGAGGCTTTTTTGG
CGACTGATTAATAAAAAATAAATACGTCTCCGGCTCCGGCGGAGACGGAGACTCGATAAGGTCTTCATCACTCTCCGAAAAAAC



StuI | AvrII
AGGCC TAGGCTTTTGC AAAAGCTCCCGGGAGCTTGTATATCCATTTTCGGATCTGATCAGCACGTGTTGACAATTAATCATCGG
TCCGGATCCGAAAACGTTTTTCGAGGGCCCTCGAACATATAGGTA AAAAGCCTAGACTAGTTCGTGCACA ACTGTTAATTAGTAGCC

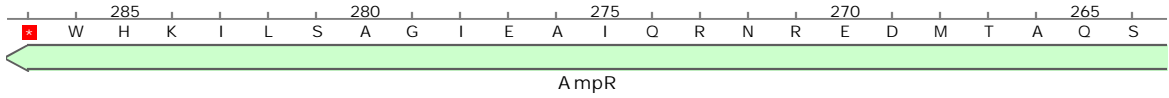




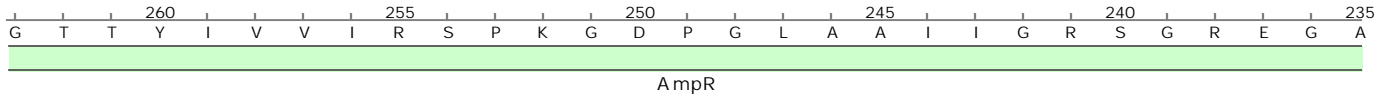


TGAGATTATCAAAAAGGATCTTCACCTAGATCCTTTTAAATTA AAAATGAAGTTTTAAATCAATCTAAAGTATATATGAGTAAAC
 ACTCTAATAGTTTTTCTAGAAAGTGGATCTAGGAAAATTTAATTTTTACTTCAA AATTTAGTTAGATTTTCATATATACTCATTTG 4250

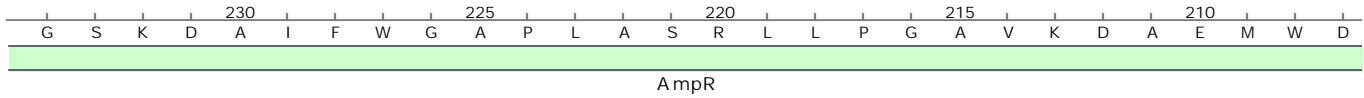
TTGGTCTGACAGTTACCAATGCTTAATCAGTGAGGCACCTATCTCAGCGATCTGTCTATTTTCGTTTCATCCATAGTTGCCTGACTC
 AACCAGACTGTCAATGGTTACGAATTAGTCACTCCGTTGGATAGAGTTCGCTAGACAGATAAAGCAAGTAGGTATCAACGGACTGAG 4335



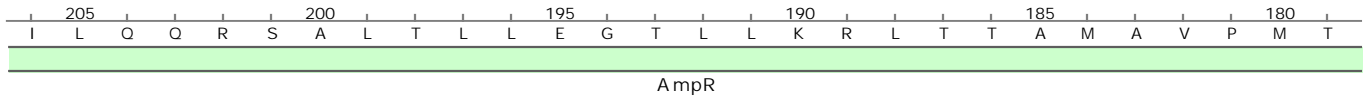
AhdI
 CCCGTCGTGTAGATAACTACGATACGGGAGGGCTTACCATCTGGCCCCAGTGCTGCAATGATACCGCGAGACCCACGCTCACCGG
 GGGCAGCACATCTATTGATGCTATGCCCTCCCGAATGGTAGACCGGGGTCACGACGTTACTATGGCGCTCTGGGTGCGAGTGGCC 4420



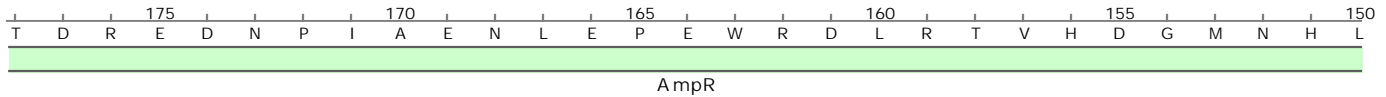
CTCCAGATTTATCAGCAATAAACCAGCCAGCCGGAAGGGCCGAGCGCAGAAGTGGTCCTGCAACTTTATCCGCCTCCATCCAGTC
 GAGGTCTAAATAGTCGTTATTTGGTCGGTCGGCCTTCCCGGCTCGCGTCTTACCAGGACGTTGAAATAGGCGGAGGTAGGTACAG 4505



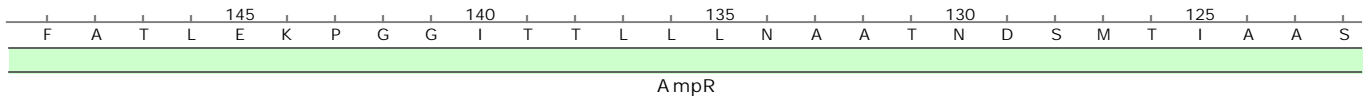
FspI
 TATTAATTGTTGCCGGGAAGCTAGAGTAAGTAGTTCGCCAGTTAATAGTTTTGCCGAACGTTGTTGCCATTGCTACAGGCATCGTG
 ATAATTAACAACGGCCCTTCGATCTCATTCAATCAAGCGGTCAATTATCAAACGCGTTGCAACAACGGTAACGATGTCCGTAGCAC 4590



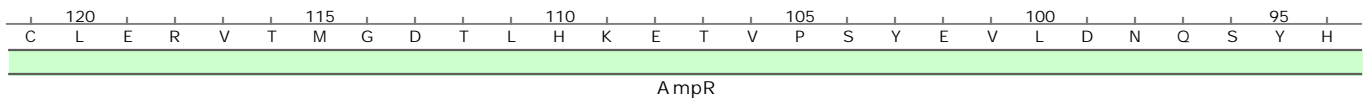
GTGTCACGCTCGTCGTTTGGTATGGCTTCATTCAGCTCCGGTTCCCAACGATCAAGGCGAGTTACATGATCCCCCATGTTGTGCA
 CACAGTGCAGAGCAGCAAACCATACCGAAGTAAGTTCGAGGCCAAGGGTTGCTAGTTCGGCTCAATGTAAGGGGTACAACACGT 4675

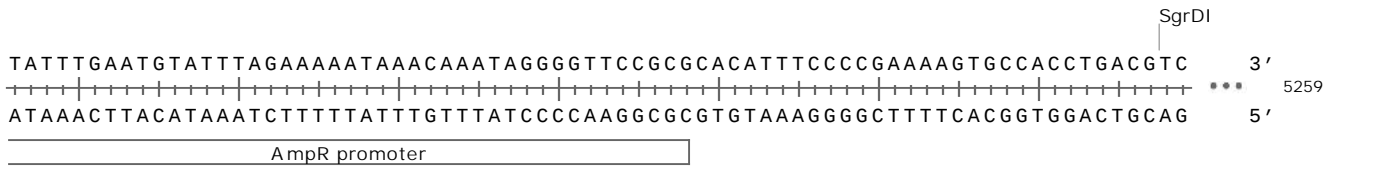
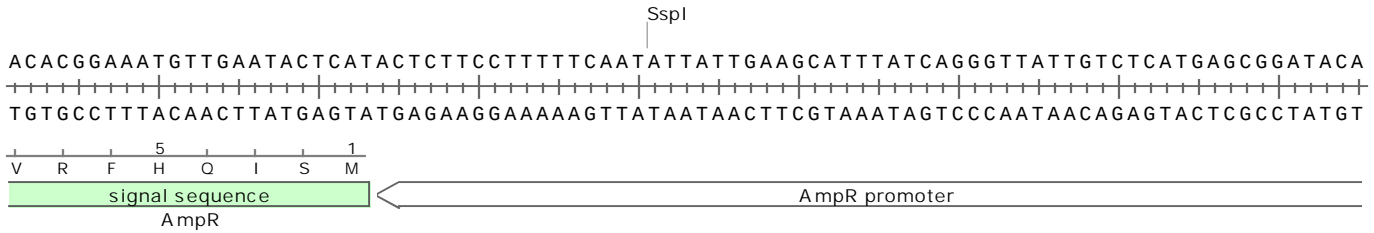
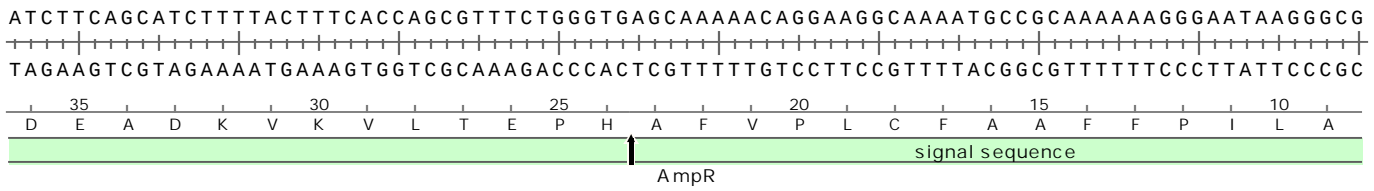
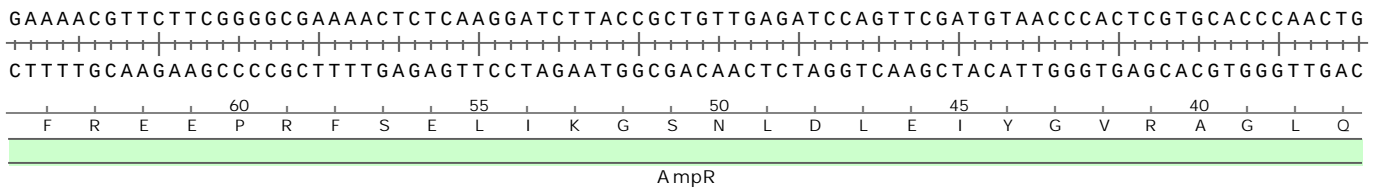
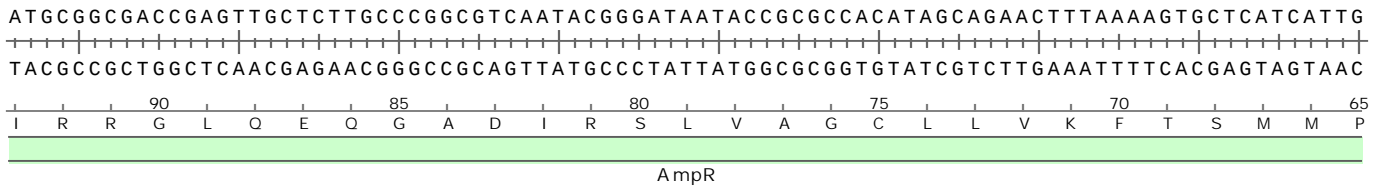


PvuII
 AAAAAGCGGTTAGCTCCTTCGGTCTCCGATCGTTGTCAGAAGTAAGTTGGCCGCAAGTGTATCACTCATGGTTATGGCAGCACT
 TTTTTCGCCAATCGAGGAAGCCAGGAGGCTAGCAACAGTCTTTCATTCAACCGGCGTCACAATAGTGAGTACCAATACCGTCTGTA 4760
















ScaI
 GCATAATTCTTACTGTCATGCCATCCGTAAGATGCTTTTCTGTGACTGGTGAGTACTCAACCAAGTCATTCTGAGAATAGTGT
 CGTATTAAGAGAATGACAGTACGGTAGGCATTCTACGAAAAGACACTGACCACTCATGAGTTGGTTTCAGTAAGACTCTTATCACA 4845





Enzymes	Sites	
Acc65I	1	1172
AflII	1	908
AhdI	1	4336
ApaI	1	1245
AvrII	1	2299
BamHI	1	1181
BbsI	1	1461
BglII	1	12
BipI	1	914
BmgBI	1	2562
Bpu10I	1	180
BsmI	1	3012
BspQI	1	3327
BstXI	2	1192 1218
BstZ17I	1	3064
Bsu36I	1	1177
Eco53kI	1	816
EcoRI	1	1196
EcoRV	1	1208
FseI	1	2704
FspI	1	4558
HindIII	1	911
KpnI	1	1176
MauBI	1	2464
MfeI	1	161
MluI	1	228
MscI	1	2431
NdeI	1	484
NotI	1	1223
NruI	1	208
PaeR7I	1	1229
PciI	1	3443
PspOMI	1	1241
PspXI	1	1229
PstI	1	1205
PvuI	1	4706
SacI	1	818
SapI	1	3327
ScaI	1	4816
SgrAI	1	2542
SgrDI	1	5257
SnaBI	1	590
SpeI	1	249
SrfI	1	961
SspI	1	5140
StuI	1	2298
TiiI	1	1229
XbaI	1	1235
XhoI	1	1229

Feature	Location	Size (bp)			Type
✓ CMV enhancer /note = human cytomegalovirus immediate early enhancer	235 .. 614	380			enhancer
✓ CMV promoter /note = human cytomegalovirus (CMV) immediate early promoter	615 .. 818	204			promoter
✓ T7 promoter /note = promoter for bacteriophage T7 RNA polymerase	863 .. 881	19			promoter
✓ QBI SP163 /note = strong translational enhancer derived from the 5' UTR of the mouse VEGF gene	917 .. 1079	163			misc_feature
✓ ATG /product = start codon /translation = M 1 amino acid = 149.2 Da	1080 .. 1082	3			CDS
✓ 6xHis /product = 6xHis affinity tag /translation = HHHHHH 6 amino acids = 840.9 Da	1092 .. 1109	18			CDS
✓ Xpress™ tag ▶ 2 segments /product = Xpress™ epitope tag, including an enterokinase recognition and cleavage site /translation = DLY,DDDDK 8 amino acids = 998.0 Da	1149 .. 1172	24			CDS
✓ MCS /note = multiple cloning site	1172 .. 1246	75			misc_feature
✓ bGH poly(A) signal /note = bovine growth hormone polyadenylation signal	1272 .. 1496	225			polyA_signal
✓ f1 ori /direction = RIGHT /note = f1 bacteriophage origin of replication; arrow indicates direction of (+) strand synthesis	1542 .. 1970	429			rep_origin
✓ SV40 promoter /note = SV40 enhancer and early promoter	1984 .. 2314	331			promoter
✓ SV40 ori /note = SV40 origin of replication	2165 .. 2300	136			rep_origin
✓ EM7 promoter /note = synthetic bacterial promoter	2362 .. 2409	48			promoter

Feature	Location	Size (bp)			Type
✓ BleoR	2428 .. 2802	375			CDS
/gene	= Sh ble from Streptoalloteichus hindustanus				
/product	= antibiotic-binding protein				
/note	= confers resistance to bleomycin, phleomycin, and Zeocin™				
/translation	= MAKLTSAVPVLTARDVAGAVEFWTDRLGFSRDFVEDDFAGVVRDDVTLFISAVQDQVVPDNTLAWVWVRGLDELYAEWSEVVST NFRDASGPAMTEIGEOPWGREFALRDPAGNCVHFVAEEQD*				
	124 amino acids = 13.8 kDa				
✓ SV40 poly(A) signal	2932 .. 3053	122			polyA_signal
/note	= SV40 polyadenylation signal				
✓ M13 rev	3102 .. 3118	17			primer_bind
/note	= common sequencing primer, one of multiple similar variants				
✓ ori	3504 .. 4092	589			rep_origin
/direction	= LEFT				
/note	= high-copy-number CoIE1/pMB1/pBR322/pUC origin of replication				
✓ AmpR	4263 .. 5123	861			CDS
▶ 2 segments					
/gene	= bla				
/product	= -lactamase				
/note	= confers resistance to ampicillin, carbenicillin, and related antibiotics				
/translation	= MSIQHFRVALIPFFAAFLPVFA,HPETLVKVKDAEDQLGARVGYIELDLSNGKILESFRPEERFPMSTFKVLLCGAVLSRIDAGQE QLGRRIHYSQNDLVEYSPVTEKHLTDGMTVRELCSAAITMSDNTAANLLLTIGGPKELTAFLLNMGDHVTRLDRWEPELNEAIPN DERDTTTPVAMATTLRKLTLGELLTLASRQQLIDWMEADKVAGPLLRALPAGWFIADKSGAGERGSRGIIAALGPDGKPSRIVVIY TTGSOATMDFRNRIAFIGASIKHW*				
	286 amino acids = 31.6 kDa				
✓ AmpR promoter	5124 .. 5228	105			promoter
/gene	= bla				

Description: Mammalian cell vector for high-level expression of proteins with a cleavable N-terminal 6xHis tag.

Created: Tuesday, Jul 31, 2012

Last Modified: Saturday, Jan 5, 2013

Accession Number:

Code Number:

Sequence Author: Invitrogen (Life Technologies)

DNA Type: Synthetic DNA

Laboratory Host Organism: Mammalian Cells

Bacterial Transformation Strain: Unspecified

Dam⁺ Dcm⁺ EcoKI⁺

Comments:

References: